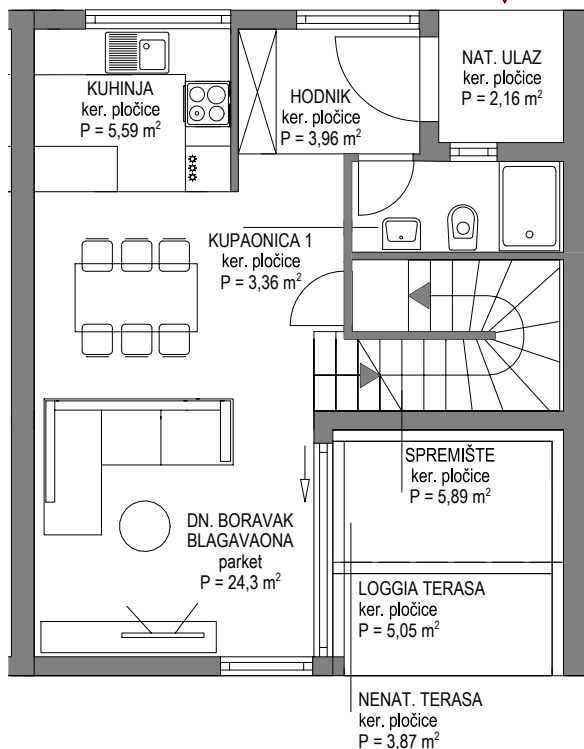
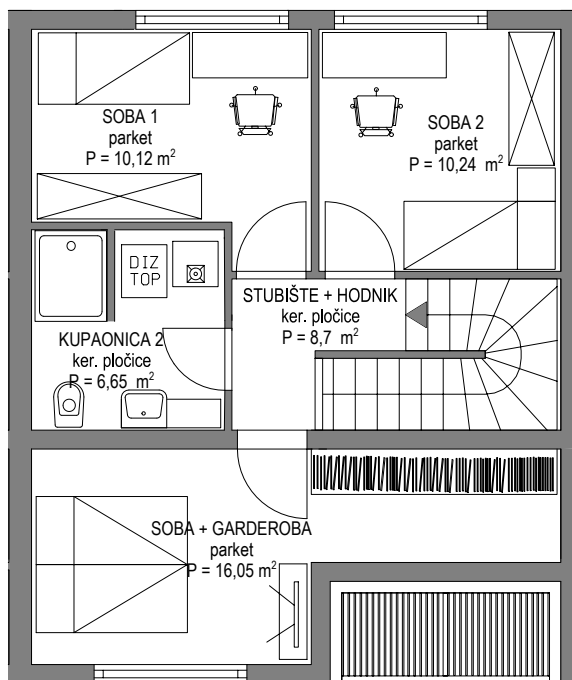


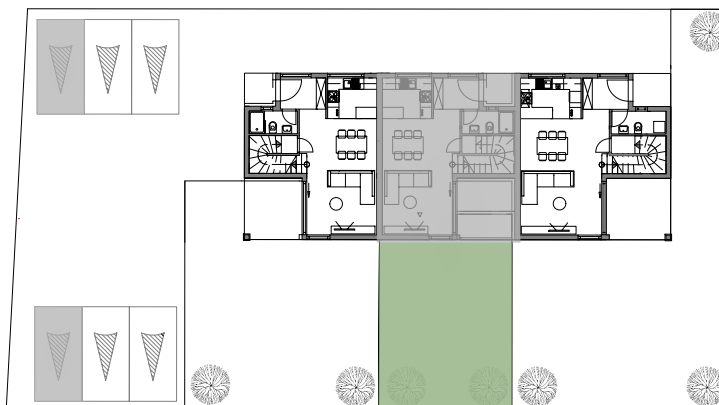
PRIZEMLJE



1. KAT



SITUACIJA



PROSTORIJA	Brutto (m2)	Koeficijent	Netto (m2)
NATKRIVENI ULAZ	2,16	0,5	1,08
HODNIK	3,96	1,0	3,96
BLAGAVAONICA I DN. BORAVAK	24,3	1,0	24,30
KUPAONICA 1	3,36	1,0	3,36
SPREMIŠTE	5,89	0,75	4,42
KUHINJA	5,59	1,0	5,59
SOBA + GARDEROBA	16,05	1,0	16,05
SOBA 1	10,12	1,0	10,12
SOBA 2	10,24	1,0	10,24
HODNIK + STUBIŠTE	8,7	1,0	8,70
LOGGIA TERASA	5,05	0,75	3,79
NENAT. TERASA	3,87	0,25	0,97
KUPAONICA 2	6,65	1,0	6,65
KUĆNI VRT	60	0,1	6,00
PARKIRNO MJESTO X 2	12,5	0,2	5,00
UKUPNO stambeno:	105,94	/	99,22
UKUPNO stamb. + dvorište :	165,94	/	105,22