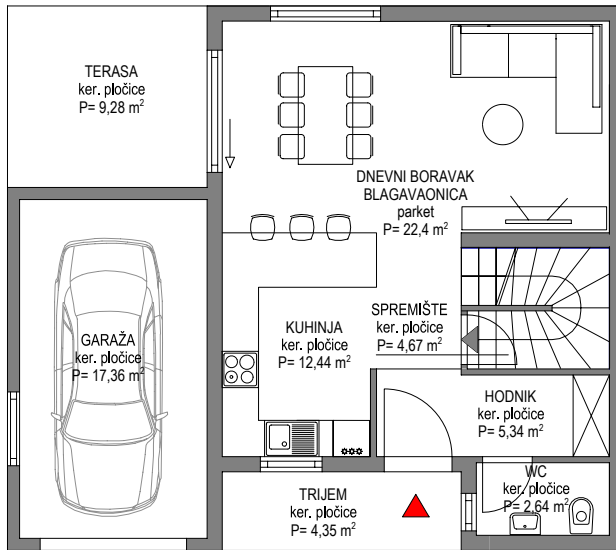


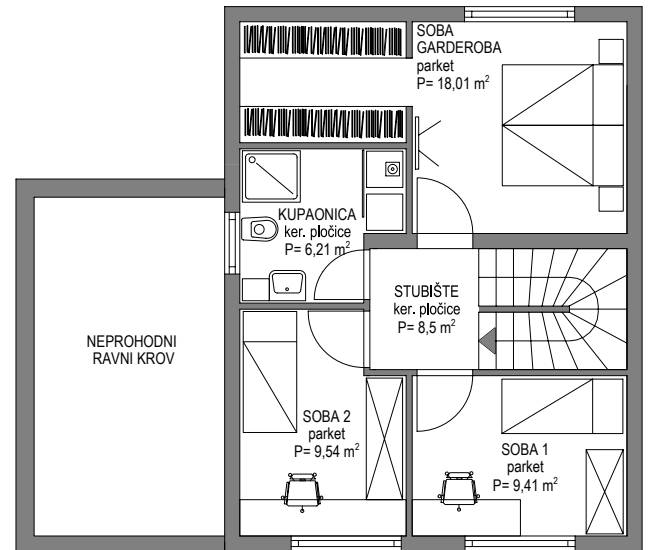
OBJEKT : "DUPLEX GARAŽA"

STAN: 01

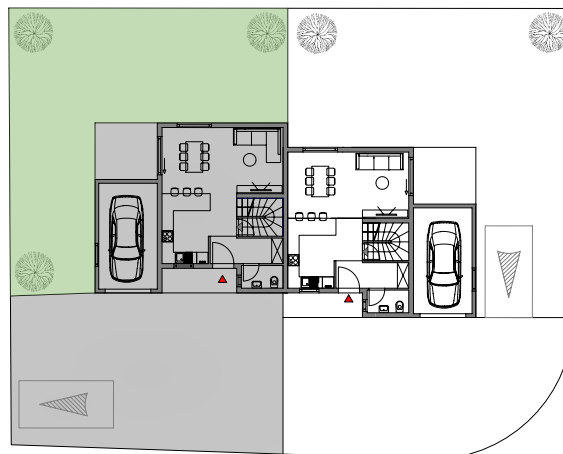
PRIZEMLJE



1. KAT



SITUACIJA



PROSTORIJA	Brutto (m2)	Koeficijent	Netto (m2)
TRIJEM	4,35	0,5	2,18
HODNIK	5,34	1,0	5,34
BLAGAVAONICA I DN. BORAVAK	22,4	1,0	22,40
WC	2,64	1,0	2,64
SPREMIŠTE	4,67	0,75	3,50
KUHNJA	12,44	1,0	12,44
SOBA + GARDEROBA	18,01	1,0	18,01
SOBA 1	9,41	1,0	9,41
SOBA 2	9,54	1,0	9,54
STUBIŠTE	8,5	1,0	8,50
NENAT. TERASA	9,28	0,25	2,32
KUPAONICA	6,21	1,0	6,21
GARAŽA	17,36	0,75	13,02
KUĆNI VRT + 1 PARKING MJESTO UKLJUČENO	245	0,1	24,50
UKUPNO stambeno:	130,15	/	115,51
UKUPNO stamb. + dvorište :	375,15	/	140,01