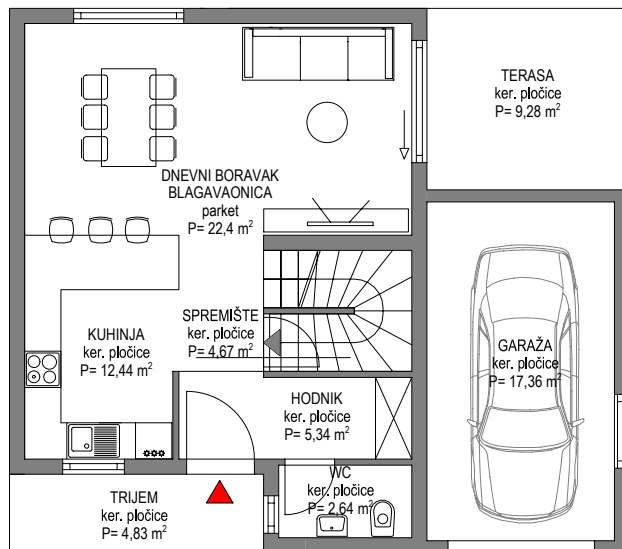


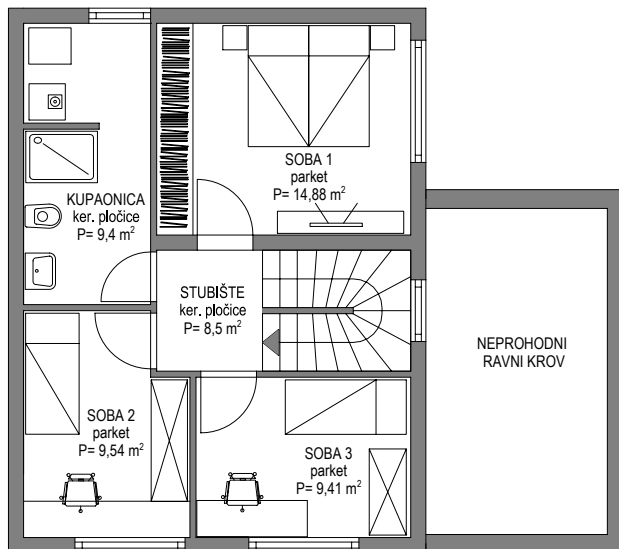
OBJEKT : "DUPLEX GARAŽA"

STAN: 02

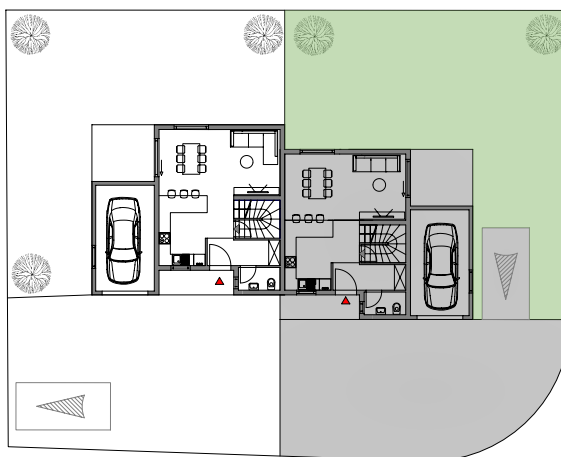
PRIZEMLJE



1. KAT



SITUACIJA



PROSTORIJA	Brutto (m2)	Koeficijent	Netto (m2)
TRIJEM	4,83	0,5	2,42
HODNIK	5,34	1,0	5,34
BLAGAVAONICA I DN. BORAVAK	22,4	1,0	22,40
WC	2,64	1,0	2,64
SPREMIŠTE	4,67	0,75	3,50
KUHNJA	12,44	1,0	12,44
SOBA 1	14,88	1,0	14,88
SOBA 2	9,54	1,0	9,54
SOBA 3	9,41	1,0	9,41
STUBIŠTE	8,5	1,0	8,50
NENAT. TERASA	9,28	0,25	2,32
KUPAONICA	9,4	1,0	9,40
GARAŽA	17,36	0,75	13,02
KUĆNI VRT + 1 PARKING MJESTO UKLJUČENO	255	0,1	25,50
UKUPNO stambeno:	130,69	/	115,81
UKUPNO stamb. + dvorište :	385,69	/	141,31