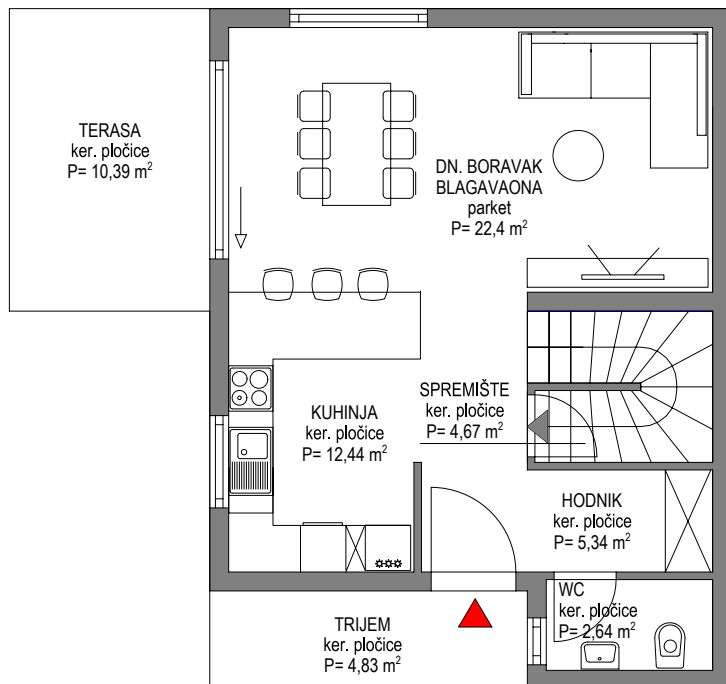


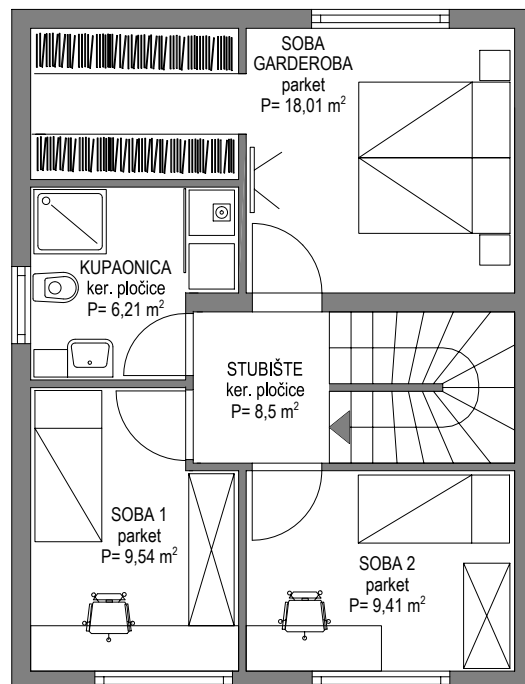
OBJEKT : "DUPLEX"

STAN: 01

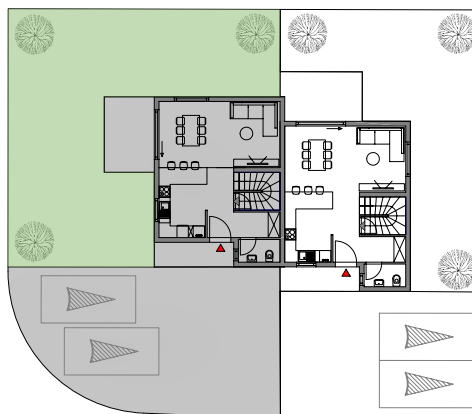
PRIZEMLJE



1. KAT



SITUACIJA



PROSTORIJA	Brutto (m2)	Koeficijent	Netto (m2)
TRIJEM	4,83	0,5	2,42
HODNIK	5,34	1,0	5,34
BLAGAVAONICA I DN. BORAVAK	22,4	1,0	22,40
WC	2,64	1,0	2,64
SPREMIŠTE	4,67	0,75	3,50
KUHINJA	12,44	1,0	12,44
SOBA I GARDEROBA	18,01	1,0	18,01
SOBA 1	9,54	1,0	9,54
SOBA 2	9,41	1,0	9,41
STUBIŠTE	8,5	1,0	8,50
NENAT. TERASA	10,39	0,25	2,60
KUPAONICA	6,21	1,0	6,21
KUĆNI VRT + 2 PARKING MJESTA UKLJUČENA	220	0,1	22,00
UKUPNO stambeno:	114,38	/	103,01
UKUPNO stamb. + dvorište :	334,38	/	125,01