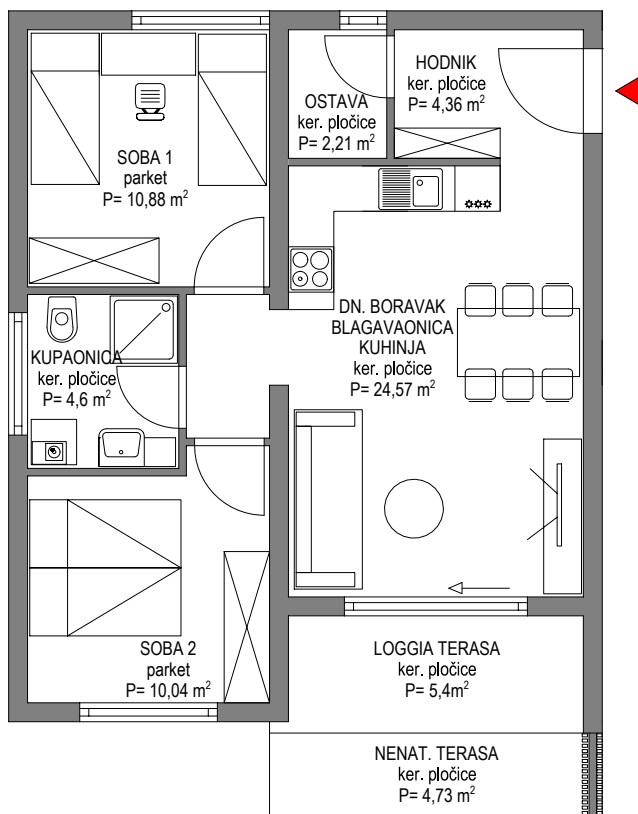


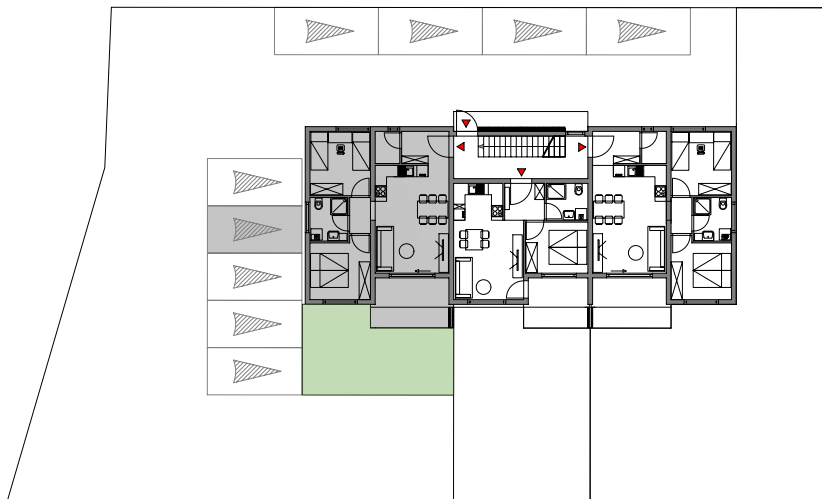
OBJEKT : "VIŠESTAMBENA"

STAN: 01

## PRIZEMLJE



## SITUACIJA



PROSTORIJA	Brutto (m2)	Koeficijent	Netto (m2)
HODNIK	4,36	1,0	4,36
BLAG., DN. BORAVAK I KUHINJA	24,57	1,0	24,57
KUPAONICA	4,6	1,0	4,60
SOBA 1	10,88	1,0	10,88
SOBA 2	10,04	1,0	10,04
OSTAVA	2,21	1,0	2,21
NENAT. TERASA	4,73	0,25	1,18
LOGGIA TERASA	5,4	0,75	4,05
KUĆNI VRT	30	0,1	3,00
PARKIRNO MJESTO	12,5	0,2	2,50
<b>UKUPNO stambeno:</b>	<b>66,79</b>	<b>/</b>	<b>61,89</b>