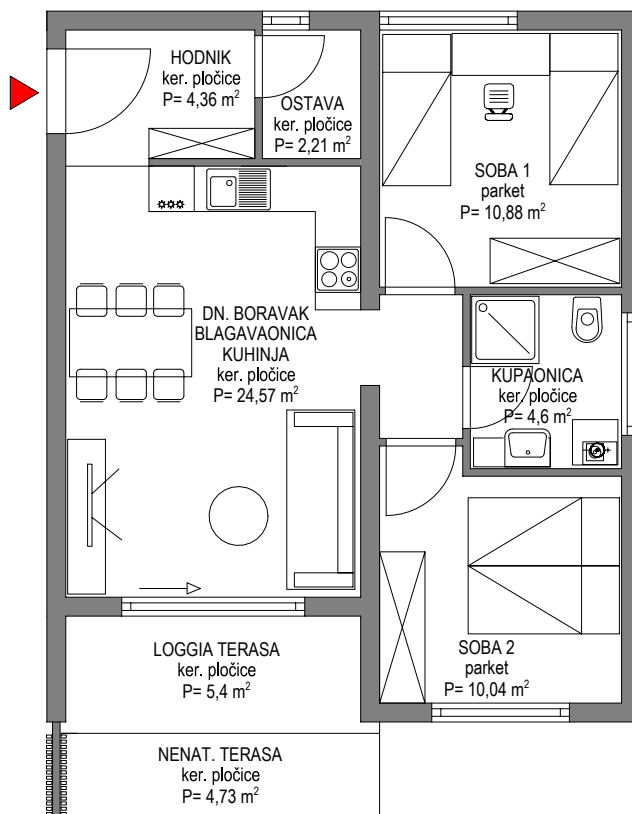


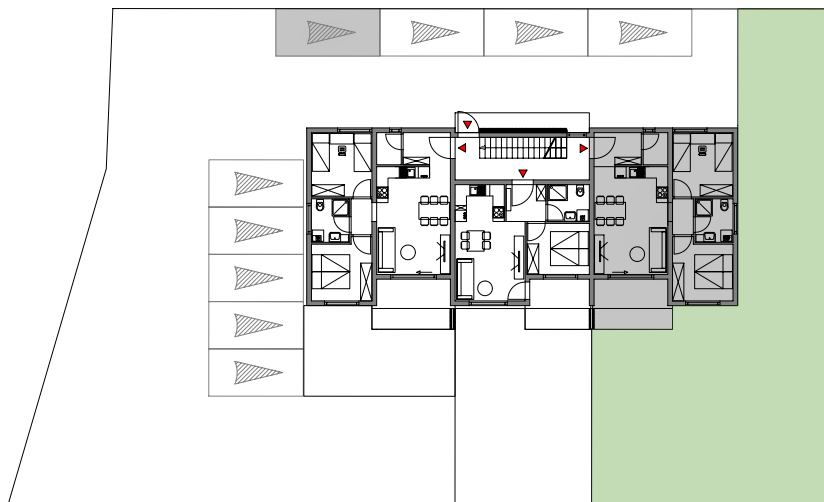
OBJEKT : "VIŠESTAMBENA"

STAN: 03

PRIZEMLJE



SITUACIJA



PROSTORIJA	Brutto (m2)	Koeficijent	Netto (m2)
HODNIK	4,36	1,0	4,36
BLAG., DN. BORAVAK I KUHINJA	24,57	1,0	24,57
KUPAONICA	4,6	1,0	4,60
OSTAVA	2,21	1,0	2,21
SOBA 1	10,88	1,0	10,88
SOBA 2	10,04	1,0	10,04
LOGGIA TERASA	5,4	0,75	4,05
NENAT. TERASA	4,73	0,25	1,18
KUĆNI VRT	200	0,1	20,00
PARKIRNO MJESTO	12,5	0,2	2,50
UKUPNO stambeno:	66,79	/	61,89
UKUPNO stamb. + dvorište :	279,29	/	84,39