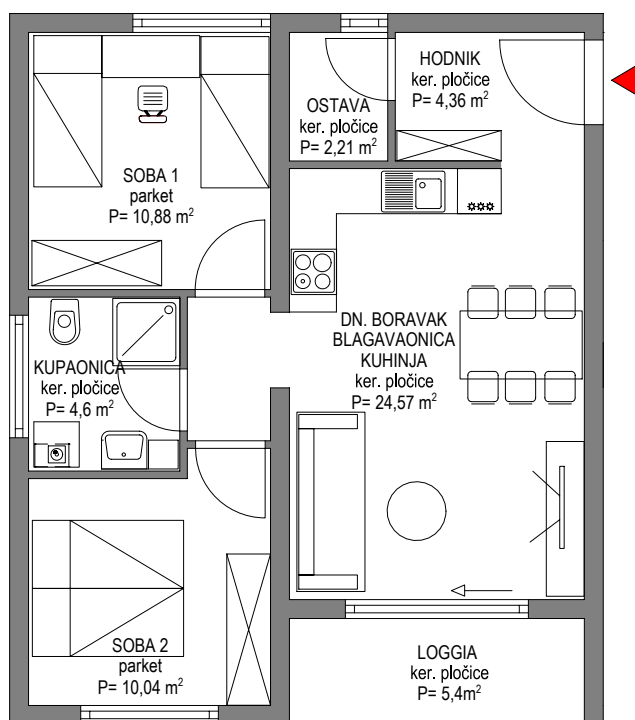


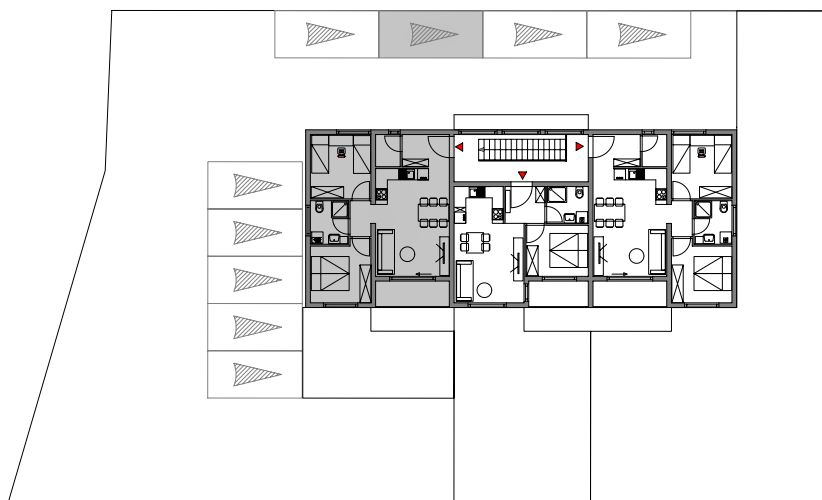
OBJEKT : "VIŠESTAMBENA"

STAN: 04

## 1. KAT



## SITUACIJA



PROSTORIJA	Brutto (m2)	Koeficijent	Netto (m2)
HODNIK	4,36	1,0	4,36
BLAG., DN. BORAVAK I KUHINJA	24,57	1,0	24,57
KUPAONICA	4,6	1,0	4,60
OSTAVA	2,21	1,0	2,21
SOBA 1	10,88	1,0	10,88
SOBA 2	10,04	1,0	10,04
LOGGIA	5,41	0,75	4,06
PARKIRNO MJESTO	12,5	0,2	2,50
UKUPNO stambeno:	62,07	/	60,72
UKUPNO stamb. + parking :	74,57	/	63,22