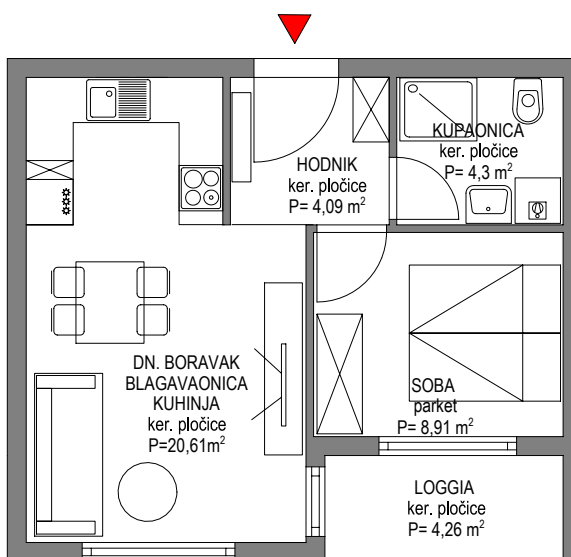


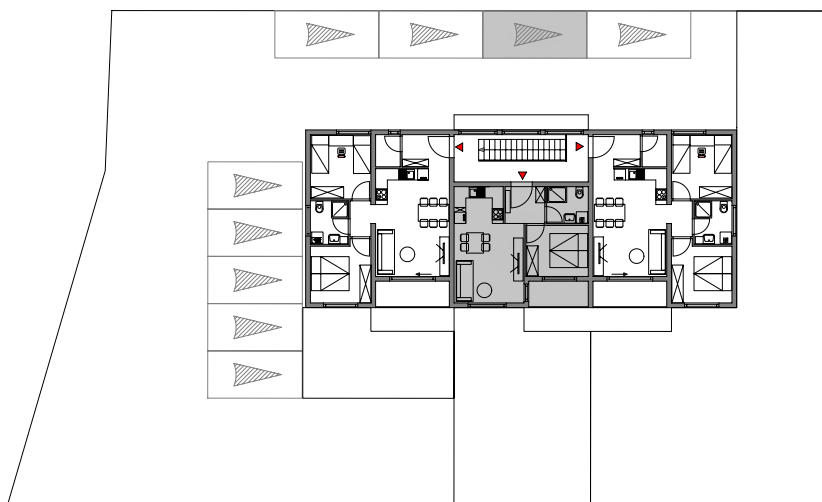
OBJEKT : "VIŠESTAMBENA"

STAN: 05

## 1. KAT



## SITUACIJA



PROSTORIJA	Brutto (m2)	Koeficijent	Netto (m2)
HODNIK	4,09	1,0	4,09
BLAG., DN. BORAVAK I KUHINJA	20,61	1,0	20,61
KUPAONICA	4,3	1,0	4,30
SOBA	8,91	1,0	8,91
LOGGIA	4,26	0,75	3,20
PARKIRNO MJESTO	12,5	0,2	2,50
UKUPNO stambeno:	42,17	/	41,11
UKUPNO stamb. + parking :	54,67	/	43,61